



BioHealth Innovation

www.biohealthinnovation.org

Founding Member



A Top 3 BioPharma Cluster

Top 10 U.S. Biopharma Clusters 2024

Ranking Based on Five Criteria:

1. NIH Funding
2. Venture Capital
Funding
3. Patents
4. Lab Space
5. Jobs



1. San Francisco Bay Area
2. Boston/Cambridge, MA
3. **BioHealth Capital Region
(Maryland/Virginia/DC Metro)**
4. New York/New Jersey
5. Los Angeles/Orange County, CA
6. San Diego
7. Greater Philadelphia
8. Raleigh-Durham, NC
(Inc. Research Triangle Park, NC)
9. Seattle
10. Chicagoland

#3 – 2024 BioHealth Capital Region (MD-VA-DC)

- 1st in Patents
- 3rd in NIH funding
- 3rd in Lab Space
- 3rd in Jobs
- 5th in VC Funding



"The BioHealth Capital Region leads the nation in patents (73,315 families) thanks to IP powerhouses like Johns Hopkins University, the NIH, and National Library of Medicine. The Maryland-Virginia-D.C. region placed third in NIH funding (5,558 awards totaling \$4.342 billion), jobs (136,164 according to BHCR based on data from labor market analytics firm Lightcast) and lab space with 35.9 million square feet according to BHCR based on data from JLL, whose figure includes the 9.2 million square feet of lab space within the NIH Campus headquarters in Bethesda, MD. In venture capital, BHCR cited PitchBook data showing the region climbing three notches year-over-year to fifth with \$1.92 billion in 2023 and \$1.01 billion in Q1-Q2 2024." - **Alex Philippidis, Senior Business Editor at Genetic Engineering & Biotechnology News**

The Growth of the “BioHealth” Brand

- BioHealth Innovation
- BioHealth Capital Region
- Office of BioHealth – Maryland Department of Commerce
- BioHealth Capital Region – Genetic Engineering News
- Activation Capital’s “Frontier BioHealth”
- Institute for BioHealth Innovation – George Mason
- AURP BioHealth Caucus
- Wisconsin’s BioHealth Industry
- Women in BioHealth – U.W. Madison
- Growing BioHealth Cluster – Ohio
- Luxembourg BioHealth Cluster
- South Korea BioHealth Industry
- Greece BioHealth Innovation Hub
- HIG BioHealth Fund
- BioHealth Sciences Oregon
- ibs.GRANADA BioHealth
- K•BIC Korea Biohealth Innovation & Start-up Center

IT ALL STARTED HERE!



BioHealth Capital Region: An Overview of the BHCR – Where You Should Be



- **Top Tier Research Universities**

Including Johns Hopkins and the University System of Maryland provide a pipeline of talent & intellectual property

- **78 National Labs & Research Institutes**

Including NIH, ARL, NRL, and NASA Goddard that receive \$19 billion annually and provide technical talent and a pipeline of tested, commercializable technologies

- **Regulatory & Governmental Bodies**

Including FDA, CMS, and HHS provide thought leadership in the ecosystem and insight into what changes are next

- **Concentration of Science & Engineering Talent**

From universities, national labs, and government positions with the technical skills to launch high-tech startups, especially with licensed intellectual property

- **Established Cluster of BioHealth Companies**

Over 2,300 BioHealth companies in BHCR from multinational corporations to cutting edge startups

Challenges to Innovation Economy

Lack of connection of innovation resources

Lack of an entrepreneurial culture & C-level executives

Lack of early-stage funding for commercializing technologies

Lack of spin-offs from federal & university R&D

Solutions for the Innovation Economy

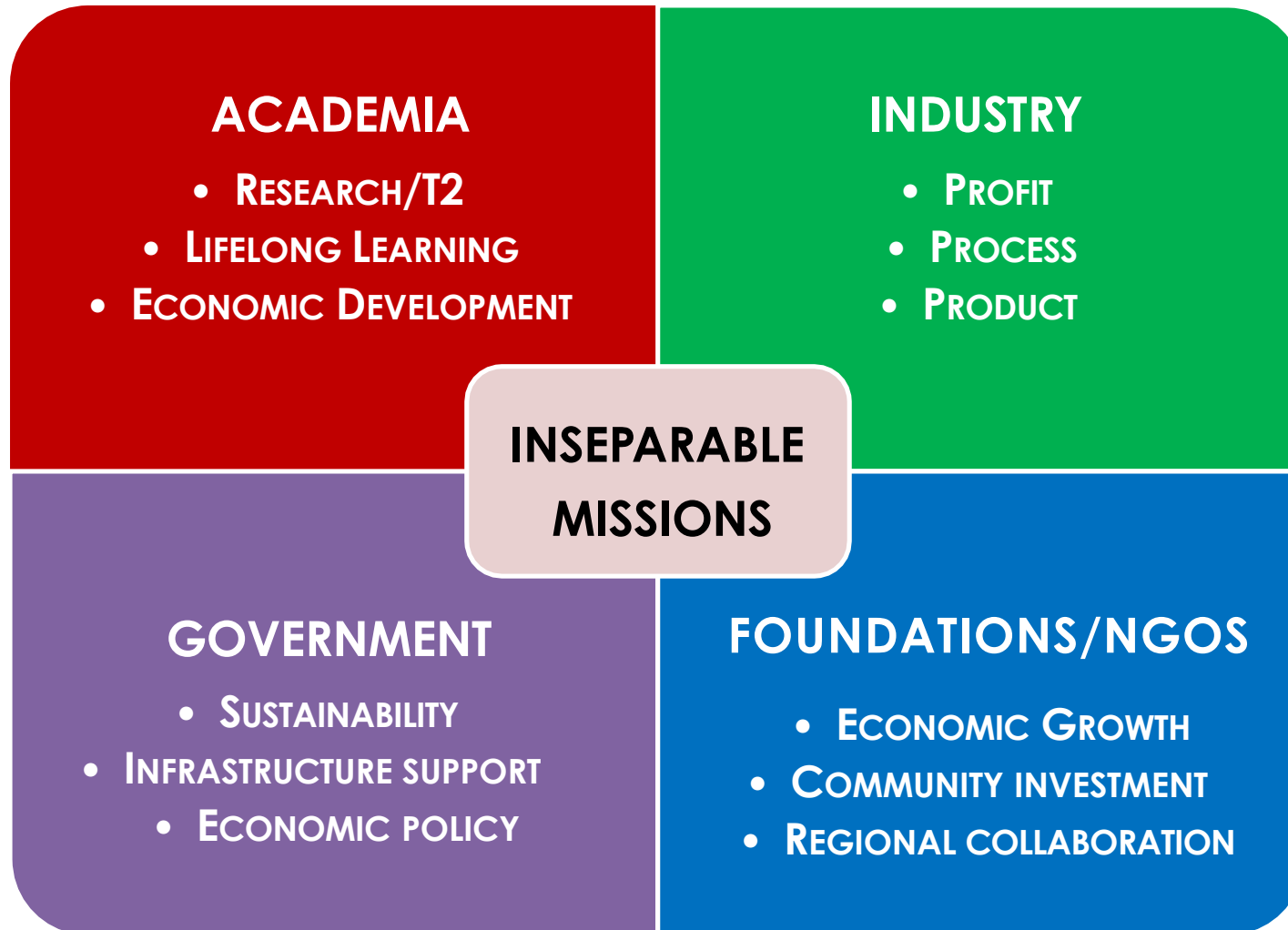
Connect regional innovation assets

Develop an entrepreneurial talent & support pipeline

Attract funding for technology commercialization

Evaluate commercially relevant federal & university technology

Regional BioHealth Ecosystem Partners



BHCR Support Organizations



Richard A. Bendis
President/CEO

"BHI sources and evaluates market-relevant biohealth intellectual properties, connects the IP with funding, and assists businesses in marketing and growth."



John Newby
CEO

"We fuel the network of leaders that drive bioscience to eradicate disease, save lives, and feed the world.....one innovation at a time."



Kelly Schlutz
CEO

"We are a collaborative community that is actively engaged in building strong technology and life science industries by supporting the efforts of our individual members."



Ron Piervincenzi , Ph.D.
CEO

"It's clear global collaboration remains essential to ensuring a focus on quality that increases supply chain resilience and facilitates advances in therapies and technologies."



Troy LeMaile-Stovall
CEO & Executive Director

"TEDCO provides framework of knowledge, funding, and networking to support an innovation eco-system that nurtures researchers, entrepreneurs, start-ups, and early-stage companies engaged in bringing innovation ideas to market."



Bill Thompkins
President & CEO

"We are a premier destination with a powerful network of existing businesses across a wide range of industries. Our deep talent pool, diverse and vibrant communities, and proximity to the federal agencies including the Departments of Transportation and Energy, FDA, and NIH position the County's companies for success."



Rachel Rath
Head of JLABS @ Washington, DC

"At JLABS @ Washington, DC, we support early-stage life science innovators with lab space, mentorship, and access to Johnson & Johnson's network."



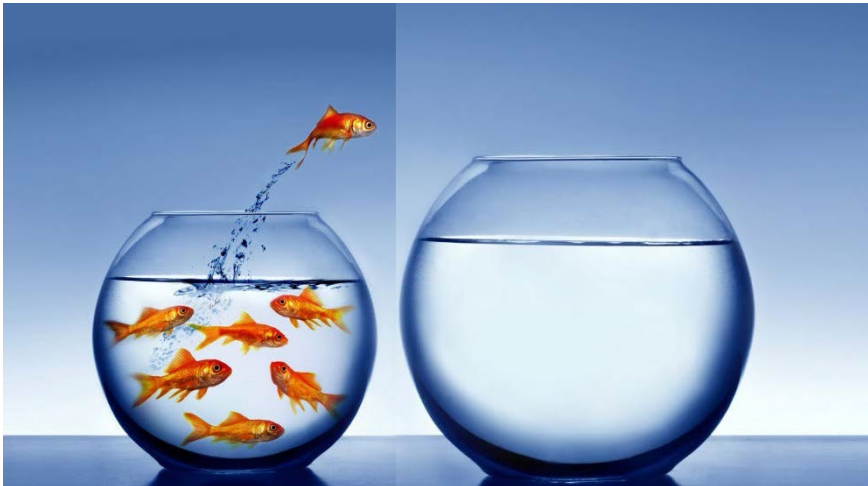
Joe Benevento
CEO

"VIPC is well-positioned to lead Virginia in developing, attracting, and retaining talent, capital, and innovation which expands investment, growth, and opportunity across the entire Commonwealth"

BioHealth Innovation: An Innovation Intermediary

A public-private partnership, serving as an innovation intermediary in the BioHealth Capital Region with a mission to:

- Advance local technologies, assets and resources
- Accelerate innovation
- Globally connect sectors, industries, communities, and markets



- Regionally, Nationally, and Internationally-Oriented
- Private-public partnership, 501(c)(3) nonprofit
- BioHealth Innovation Management, a for-profit subsidiary
- Market-driven, private sector-led and funded
- Neither a government initiative, nor a membership organization

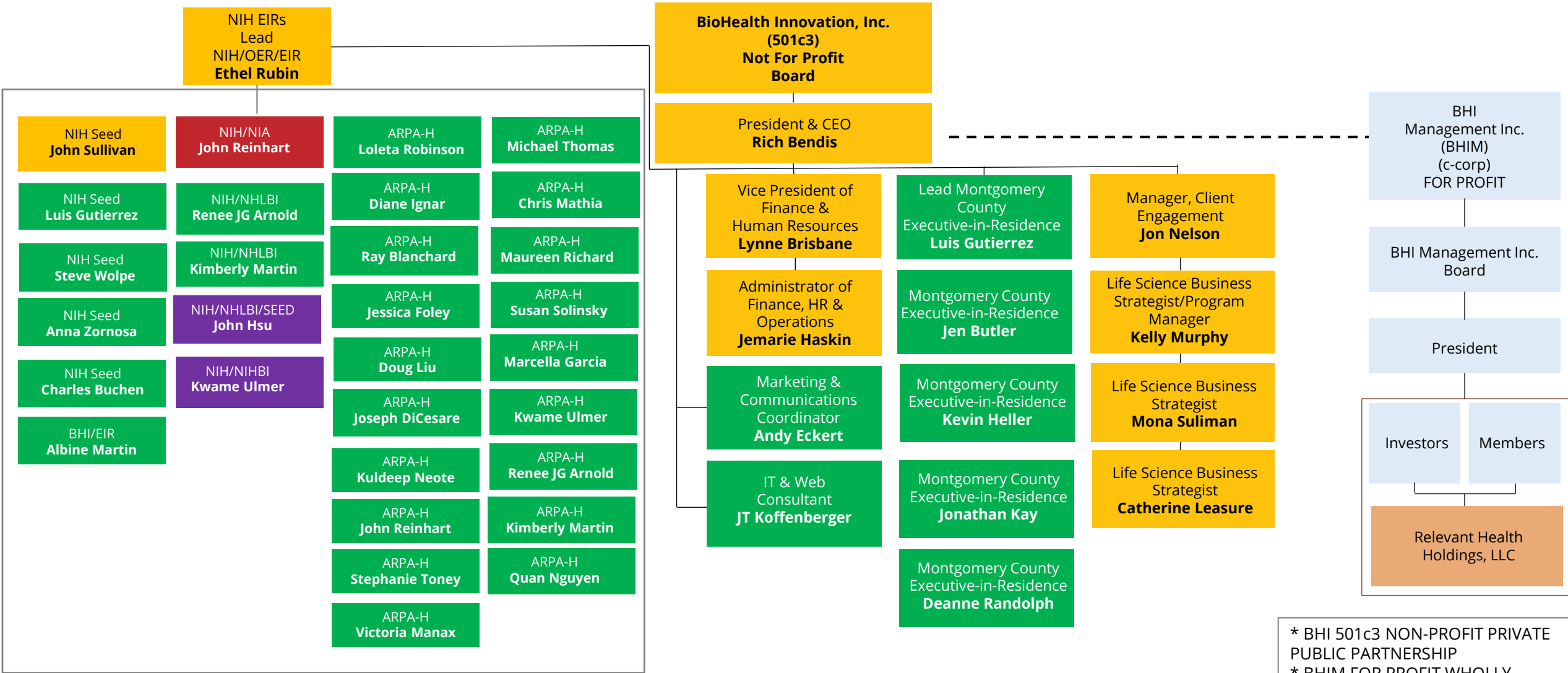
BioHealth Innovation Board of Directors

	John A. Sackett President & CEO Adventist Healthcare		Peter Ronco CEO The Emmes Corporation		Christopher Callaghan Group Vice President Healthcare Banking M&T Bank
	Joel Marcus Executive Chairman & Founder Alexandria Real Estate Equities		Amy Adams (Pending) Executive Director, Institute for Biohealth Innovation George Mason University		Rick Wieczorek President / Chief Executive Officer NIH Federal Credit Union
	Yaminah Leggett-Wells Senior Director, Alliance Management AMGEN		Steven Roberts Director, External R&D Scientist Collaborations GSK		Jarrold Borkat Chief Commercial and Strategy Officer On Demand Pharmaceuticals
	Richard A. Bendis President & CEO BioHealth Innovation Inc.		Pete Briskman (CHAIR) Executive Managing Director Lead Mid-Atlantic Life Sciences Practice Jones Lang LaSalle (JLL)		Eric Edwards Co-Founder & CEO Phlow Corporation
	Donna Edmonds (Vice Chair) Founder & CEO Brainbox Solutions		Rachel Rath Head JLABS @ Washington DC		Dr. Jay Perman Chancellor University System of Maryland
	Ronald Kurz Vice President, Business Development Group Canon Virginia, Inc.		Brett Shealy Executive Director of Life Sciences J.P. Morgan		Anthony Lakavage Sr. Vice President, Global External Affairs US Pharmacopeia
	Dr. Jessica Nadler Managing Director Deloitte Consulting, LLP		Sarah Porter Vice President Kelly Services		Charles Morton (Secretary) Partner Venable, LLP
	Jason Hall VP, Portfolio Management Emergent BioSolutions		Dave Lemus (Treasurer) CFO/COO miRecule		Aimee Smart Vice President of Clinical & Regulatory Processes United Therapeutics

Legacy Board Members



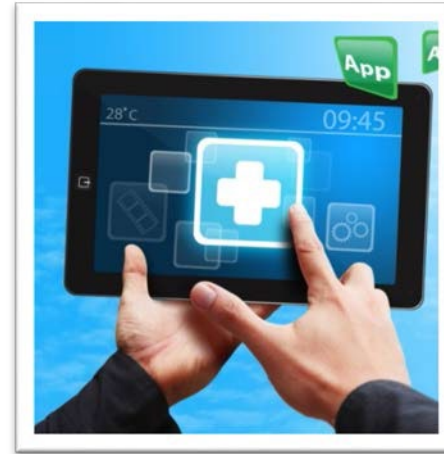
BioHealth Innovation Organizational Chart



* BHI 501c3 NON-PROFIT PRIVATE PUBLIC PARTNERSHIP
* BHIM FOR PROFIT WHOLLY OWNED BY BHI AND SERVES AS A HOLDING COMPANY AND PROVIDES CONSULTING SERVICES TO BHI

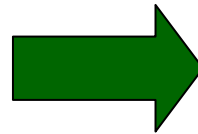
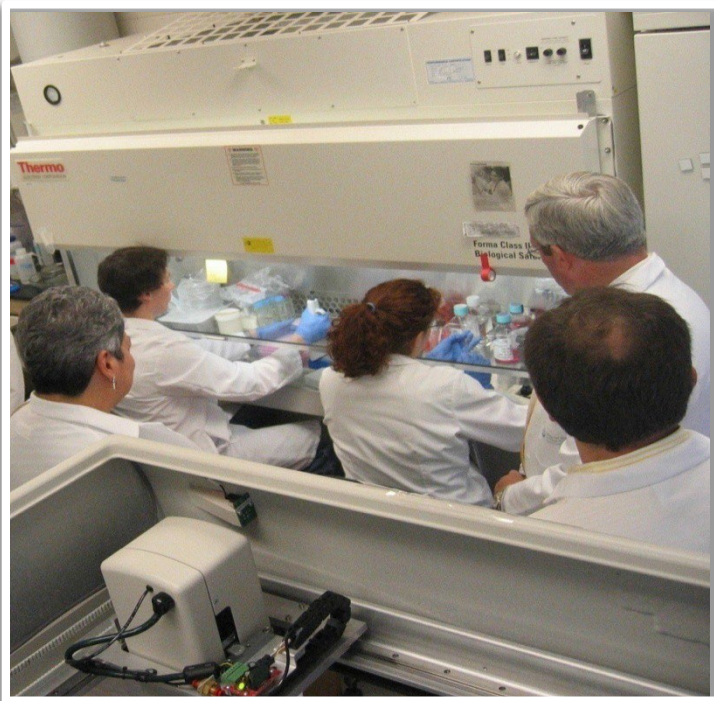
BioHealth Technology Focus

- Therapeutics
- Diagnostics
- Medical Devices
- Healthcare Services
- E-Health
- Digital Health
- Electronic Medical Records
- Biomarkers and Tools
- Health Informatics
- BioHealth Cybersecurity
- Personalized Health
- AI, Machine Learning, Quantum



Innovation Paradigm Shift

PROOF OF CONCEPT
Technological Feasibility
(Laboratory Push)
"It Works!"



PROOF OF COMMERCIAL
RELEVANCE
(Market Pull)
"It Works To Solve A
Problem" "I'll Buy It"



State of Maryland: Federal & University Resources



- Population: 6.2 Million People
- 78 Federal Laboratories, Centers & Institutes in Maryland
- Maryland Federal R&D Investment Exceeding \$25 Billion Annually

JHU and USM represent another \$5 billion in annual R&D





Unrivalled Research Assets
Unfulfilled Commercial Promise
800+ BioHealth Companies



BioHealth Regional Innovation Cluster Assets



Major Regional BioHealth Companies



ALEXANDRIA



AMGEN



EMERGENT™



Lonza



MITRE



Public BioHealth Companies Headquartered in the Region



11TH ANNUAL

BIOHEALTH
CAPITAL REGION
Week

SEPTEMBER 23-24-25, 2025

@ **usp**
Rockville, Maryland

The BioHealth Capital Region:

Where Human & Artificial Intelligence Converge in the BioHealth Industry

**BECOME
A
SPONSOR**

SAVE THE DATE



SEPTEMBER 23-24



SEPTEMBER 24

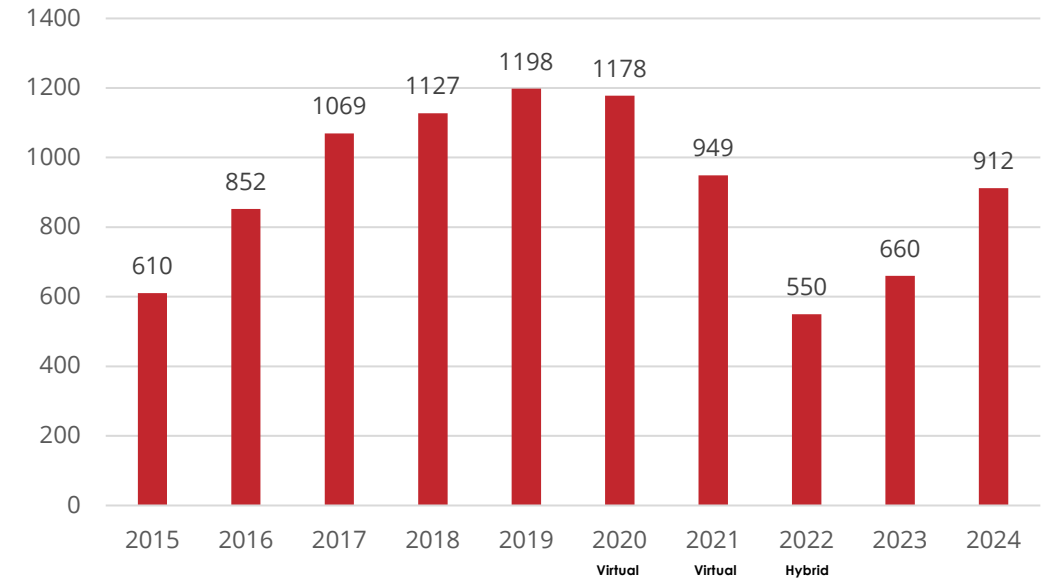


SEPTEMBER 25

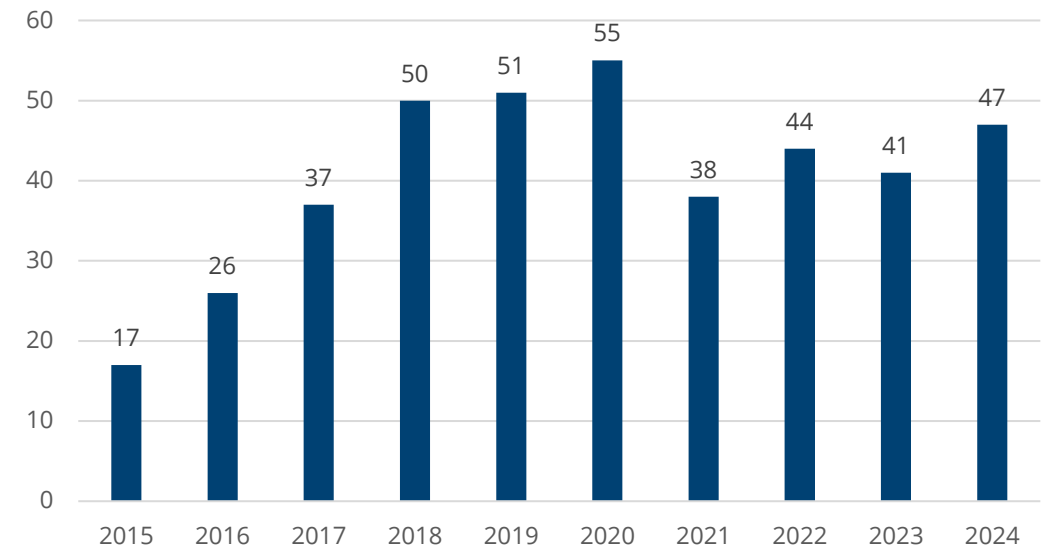


BioHealth Capital Region Forum

Registrants



Sponsors



2024 BHCR Week Highlights



Maryland Governor Wes Moore addresses the audience to open the 10th Annual BioHealth Capital Region Forum
Official Photo by the Office of Governor We Moore



John Crowley, President and CEO of Bio, Virginia Governor Glenn Youngkin, John Newby, CEO of Virginia BIO
Official Photo by Christian Martinez, Office of Governor Glenn Youngkin



Robert Stoffel, VP of Rare Disease, Complex Biologics, and Strategic Technology Alliances at Amgen



Craig Gravitz, Director of the Project Accelerator Transition Innovation Office (PATIO) at ARPA-H



BHI's Rich Bendis, Linsholm's Talia Feldman, and Wilson Sonsini's Derrick Rowe

10TH ANNUAL
BIOHEALTH
CAPITAL REGION
Week



10TH ANNUAL
BIOHEALTH
CAPITAL REGION
Week



DISTINGUISHED JUDGES:



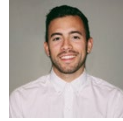
Rich Bendis MODERATOR
 President & CEO
 BioHealth Innovation, Inc.



Charles Andres
 Shareholder
 Greenberg Traurig, LLP.



Katherine Hill Ritchie
 Senior Director, Venture Funds
 TEDCO



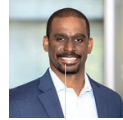
Conley Jones
 Principal- Science & Technology
 Alexandria Real Estate Equities, inc./
 Alexandria Venture Investments



Albine Martin
 Co-Founder & Managing Director
 Accelevir
 Entrepreneur-in-Residence (BHI)



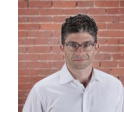
John Newby
 Chief Executive Officer
 Virginia Biotechnology Association



Derrick Rowe
 Partner
 Wilson Sonsini Goodrich & Rosati



Brett Shealy
 Executive Director, Life Sciences Banking
 J.P. Morgan



Matt Tremblay
 CEO
 Blackbird Laboratories

CONSIDERATIONS

- Technical Feasibility & Intellectual Property
- Commercialization & Marketing Strategy
- Leadership Team & Collaborations
- Funding to Date & Financial Projections










CRITERIA

- Demonstrated Proof of Concept
- Have received Funding (dilutive/nondilutive)
- Understanding Regulatory/Reimbursement Paths
- Clear Path to Market & Scalable

Crab Trap Partners:



Previous Crab Trap Winners

2024	 Linshom Medical Every Breath Counts	Linshom Medical offers the first wearable, FDA-cleared device providing a continuous, real-time respiratory profile at the bedside, monitoring key metrics to identify respiratory decline up to 70 minutes before an emergency and improving patient outcomes.
2023	 LUMINOAH	Luminoah is a MedTech company on a mission to revolutionize the enteral feeding market with a wearable system that combines durable medical equipment, consumable nutrition pouches, and remote patient monitoring to optimize compliance and clinical outcomes.
2022	 NEUROENE THERAPEUTICS	Neuroene Therapeutics was founded to develop a drug discovery platform for mitochondrial dysfunction diseases, with a patent portfolio covering numerous analogs and pending patents covering hundreds of analogs aimed at the treatment of numerous disease indications and the corresponding methods.
2021	 NANOCHON	Nanochon is innovating a 3-D printed implant that replaces cartilage, fosters tissue growth, and aims to redefine cartilage restoration in healthcare.
2020	 BrainScope®	BrainScope FDA-cleared portable EEG device triages head-injury patients for brain bleeds and concussions.
2019	 floreo	Floreo uses virtual reality to teach real-world skills to individuals with autism and other developmental challenges.
2018	 GALEN ROBOTICS	Galen Robotics designs a surgical robot that assists surgeons in performing precise, minimally invasive interventions while mitigating hand shakiness.
2017	 LIFESPROUT	LifeSprout develops synthetic soft tissue substitutes for aesthetic and reconstructive medicine, promoting tissue regrowth without the need for tissue transfers.
2016	 SONAVEX	Sonavex , pioneers automated ultrasound technology for improved surgical outcomes, offering clinicians actionable data and cost savings

BioHealth Capital Region Serial Entrepreneurs



Mark P. Clein

- Precision for Medicine, Inc.
- United BioSource Corporation
- Infosciber Corporation
- U.S. BioServices, Inc.



James S. Gammie, MD

- Correx, Inc.
- Harpoon Medical



Murat V. Kalayoglu

- Cartesian Therapeutics
- Topokine Therapeutics
- HealthHonors Corporation



Anthony Saleh

- miRecale
- Mimetas
- BioHealth Innovation



Rachel King

- GlycoMimetics
- NEA
- Genetic Therapy, Inc.



Ethan D. Leder

- Precision for Medicine, Inc.
- United BioSource Corporation
- U.S. BioServices, Inc.



Wendy Perrow

- AsclepiX Therapeutics
- Alba Therapeutics Corporation



Peter Greenleaf

- Aurinia
- Cerecor
- Sucampo
- MedImmune



Michael Richman

- NextCure
- Amplimmune



Martine A. Rothblatt Ph.D., J.D.

- United Therapeutics Corporation
- GeoStar
- SiriusXM Satellite Radio



Steve Turner

- Protea Biosciences Group, Inc.
- Clinomics BioSciences Inc.
- Quorum Sciences



Bill Enright

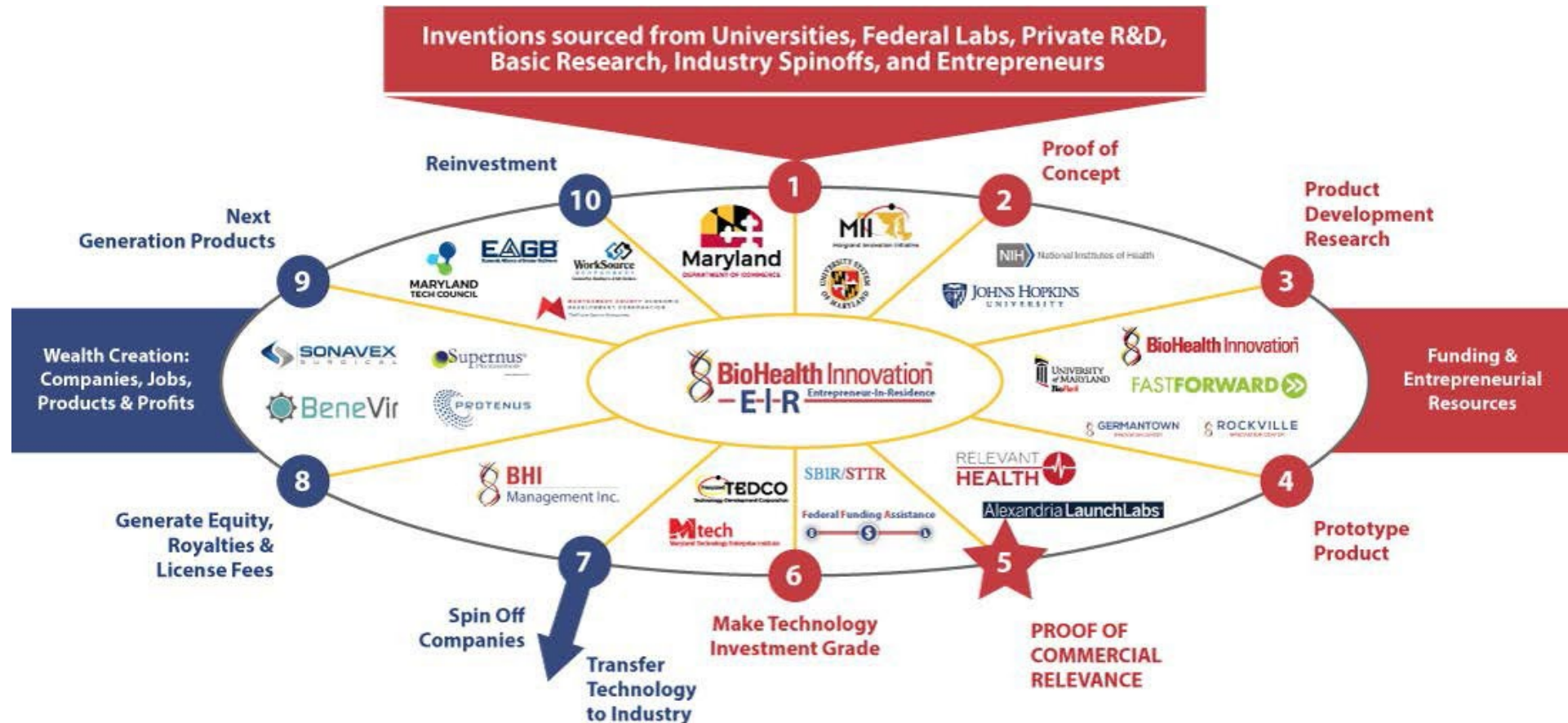
- Gravitas Therapeutics Inc.
- Barinthus Biotherapeutics
- Avidia Technologies
- Altimmune Inc.

BHI Commercialization Model

This commercialization model shows the steps and partners that are involved in the BHI commercialization and support process.

The process below leads to the creation of new companies, spin-outs and strategic partnerships.

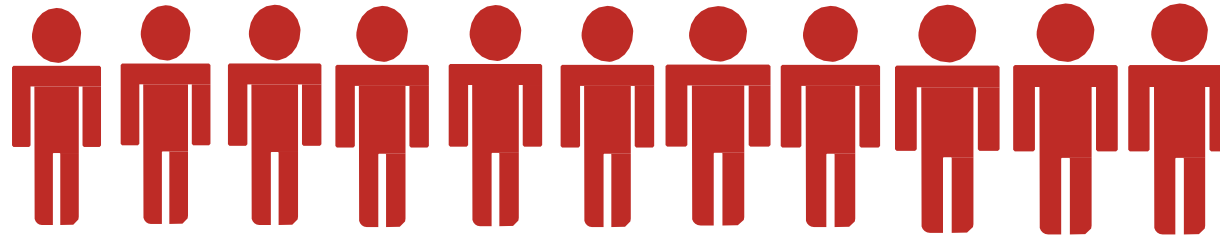
BHI connects companies with a network of public, private and academic entities.



NIH Partnership Agreements



NIH Consulting Entrepreneur
Services Contract for NIH
Entrepreneurs-in-Residence



PIA between BHI and NIH's SEED Office that supports the 27 NIH institutes and an extramural research budget of tens of billions to **promote and foster cooperative research and accelerate technology commercialization** among NIH businesses, and universities.

BHI Supports BioHealth Commercialization

BIOHEALTH INNOVATION, INC. (BHI) is a public-private, nonprofit 501(c)(3) organization focused on accelerating the commercialization of BioHealth technologies (including therapeutics, diagnostics, vaccines, medical devices, digital health, and artificial intelligence) in the BioHealth Capital Region (MD, DC, VA), US, and globally. BHI and its team of experienced EIRs have supported universities, entrepreneurs, and government agencies to accelerate biohealth technology commercialization.

ENTREPRENEUR-IN-RESIDENCE (EIR) CAPABILITIES - Over the past decade, BioHealth Innovation has developed a pool of committed and experienced BHI executives capable of supporting every need of a life science company, entrepreneur, academic researcher, or a government-funded project, including:

- Fractional CXO Support
- Fundraising Strategy
- Pitching Coaching
- Go-To-Market Strategy
- Business Development
- International Soft-Landing
- US Marketing Entry Strategy
- Partner/Deal Sourcing
- Regulatory Strategy
- Clinical Plan Development
- Reimbursement Strategy
- Intellectual Property Support
- Strategic Partner/KOL Identification
- Quality Support
- Health Economic & Outcomes
- Health Economic & Outcomes Research (HEOR)
- Development of Value Proposition(s)
- Product Differentiation
- Cybersecurity
- Artificial Intelligence (AI)

ANALYST TEAM CAPABILITIES:

Secondary & Primary Market Research • Market Validation • Competitive Analysis • Grant Mapping/Non-Dilutive Funding Support

Montgomery County Executives in Residence

Montgomery County is funding BHI's work as part of its mission to grow the local life sciences cluster

Launched in November 2022 – inspired by BHI's well-regarded NIH program, which features over a dozen experts in various disciplines, embedded within different institutes.

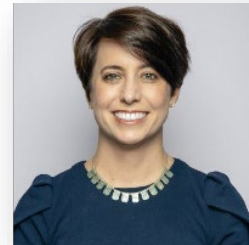
Goal is to provide impactful, life-sciences-specific services to a few local companies, opposed to general business assistance to many.

"MoCo" EIRs may provide:

- Technology validation
- Assistance with customer discovery
- Regulatory and reimbursement strategies
- Market assessment
- Non-dilutive funding assistance
- Other assistance to launch and/or advance the business.

Montgomery County is also **funding** assistance from specialized experts, attorneys, and regulatory experts that cannot be provided by EIRs

Any early or growth-stage BioHealth company headquartered in Montgomery County may be eligible for **free assistance**



Jen Butler



Luis Gutierrez



Kevin Heller



Jonathan Kay



Albine Martin



Deanne Randolph



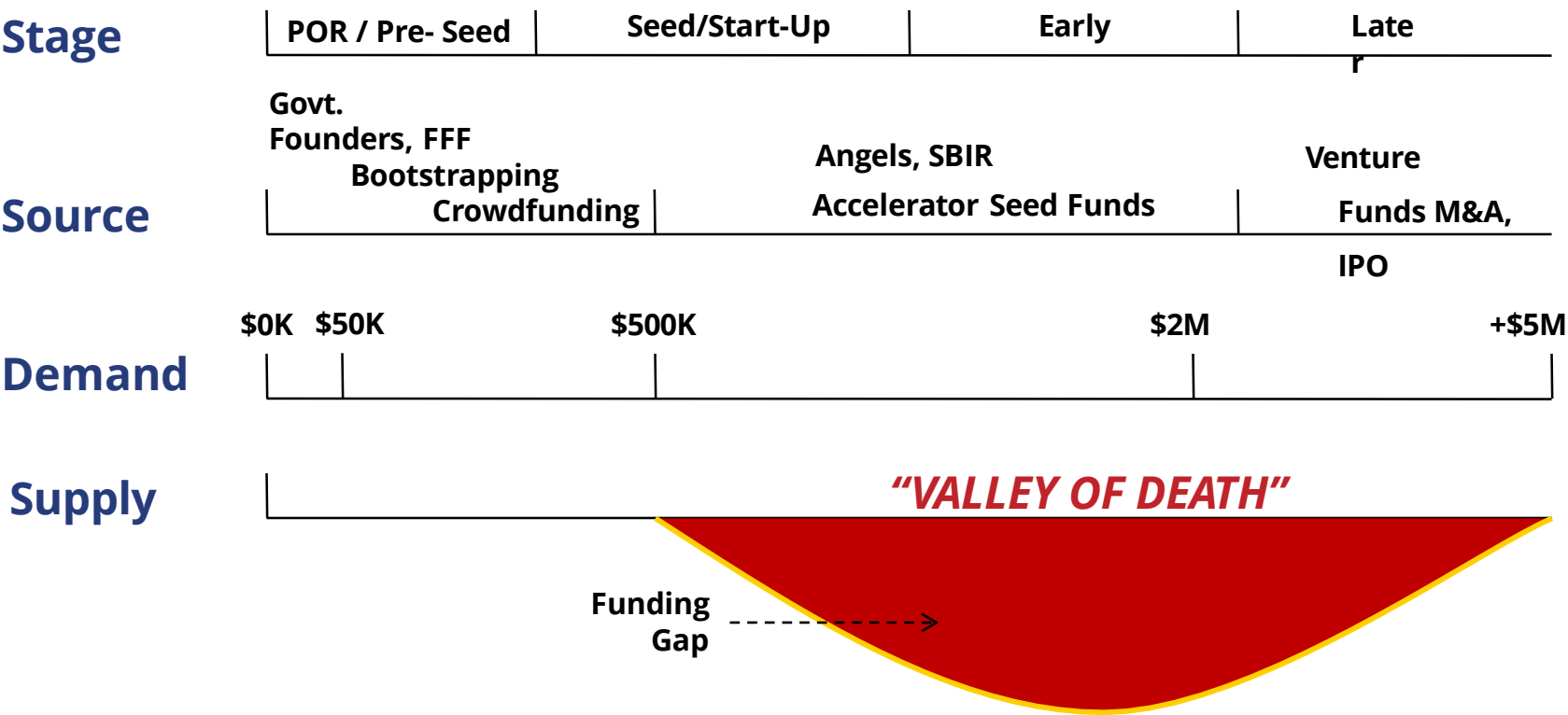
Steve Wolpe

Exclusive BHI EIR Partnership with ARPA-H

BHI signed a PIA agreement with the ARPA-H, a \$1.5 Billion HHS Institute, to provide EIRs to their performers

1. **BHI is providing part-time EIRs to ARPA-H funded Performers and Program Managers which started December 2023.**
2. **Strategic Collaboration:** BHI and ARPA-H have joined forces to enhance the development and commercialization of innovative health solutions.
3. **Entrepreneurs-in-Residence (EIRs):** BHI will provide EIRs with strategic guidance to ARPA-H Program Managers in crucial areas such as technology development, intellectual property, and small business needs.
4. **Bridge to Market Realization:** The partnership aims to bridge the gap between innovation and market realization, ensuring that transformative health solutions reach those who need them most.
5. **Embedded Support:** EIRs will provide embedded support to ARPA-H funded performers, assisting in business plan development, commercialization strategy, market research, and more.
6. **Transition to Market:** EIRs will actively contribute to the transition of ARPA-H funded solutions into the market and identify new programs aligned with ARPA-H's primary mission.
7. **Learn More:** To explore this exciting collaboration further, [read full announcement.](#)

Innovation Capital Valley of Death



Meet Our Team BioHealth Innovation



Rich Bendis
President & CEO



Lynne Brisbane
VP Finance, HR,
Operations



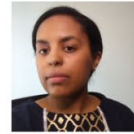
Jem Haskin
Finance, HR,
Operations



Jon Nelson
Manager of
Client Engagement



Kelly Murphy
Life Science
Business
Strategist/Program
Manager



Mona Suliman
Life Science
Business Strategist



Catherine Leasure
Life Sciences Business
Strategist



Andy Eckert
Communications &
Marketing



JT Koffenberger
IT/Systems

Entrepreneurs in Residence



Renée JG Arnold
ARPA-H EIR



Ray Blanchard
ARPA-H EIR



Charles Buchen
NIH/NIA/EIR



Jennifer Butler
Executive in
Residence



Joseph DiCesare
ARPA-H EIR



Jessica Foley
ARPA-H EIR



Marcella Garcia
APRA-H EIR



Luis T. Gutierrez
Executive in
Residence



Kevin Heller
Executive in
Residence



John Hsu
NIH/NHLBI/SEED



Diane Ignar
ARPA-H EIR



Jonathan Kay
Executive in
Residence



Doug Liu
ARPA-H EIR



Victoria Manax



Albine Martin
BHI/JHU/EIR



Kimberly Martin
ARPA-H EIR



Chris Mathia
ARPA-H EIR



Kuldeep Nolte
NIH/NIA/EIR



Quan Nguyen
ARPA-H EIR



Deanne Randolph
Executive in
Residence



John Reinhardt
ARPA-H



Maureen Richard
ARPA-H EIR



Loleta Robinson
ARPA-H EIR



Ethel Rubin
NIH/OER/EIR



Susan Solinsky
ARPA-H EIR



John Sullivan
NIH Seed/ EIR



Michael Thomas
ARPH-A EIR



Stephanie Toney
ARPH-A EIR



Kwame Ulmer
ARPA-H EIR



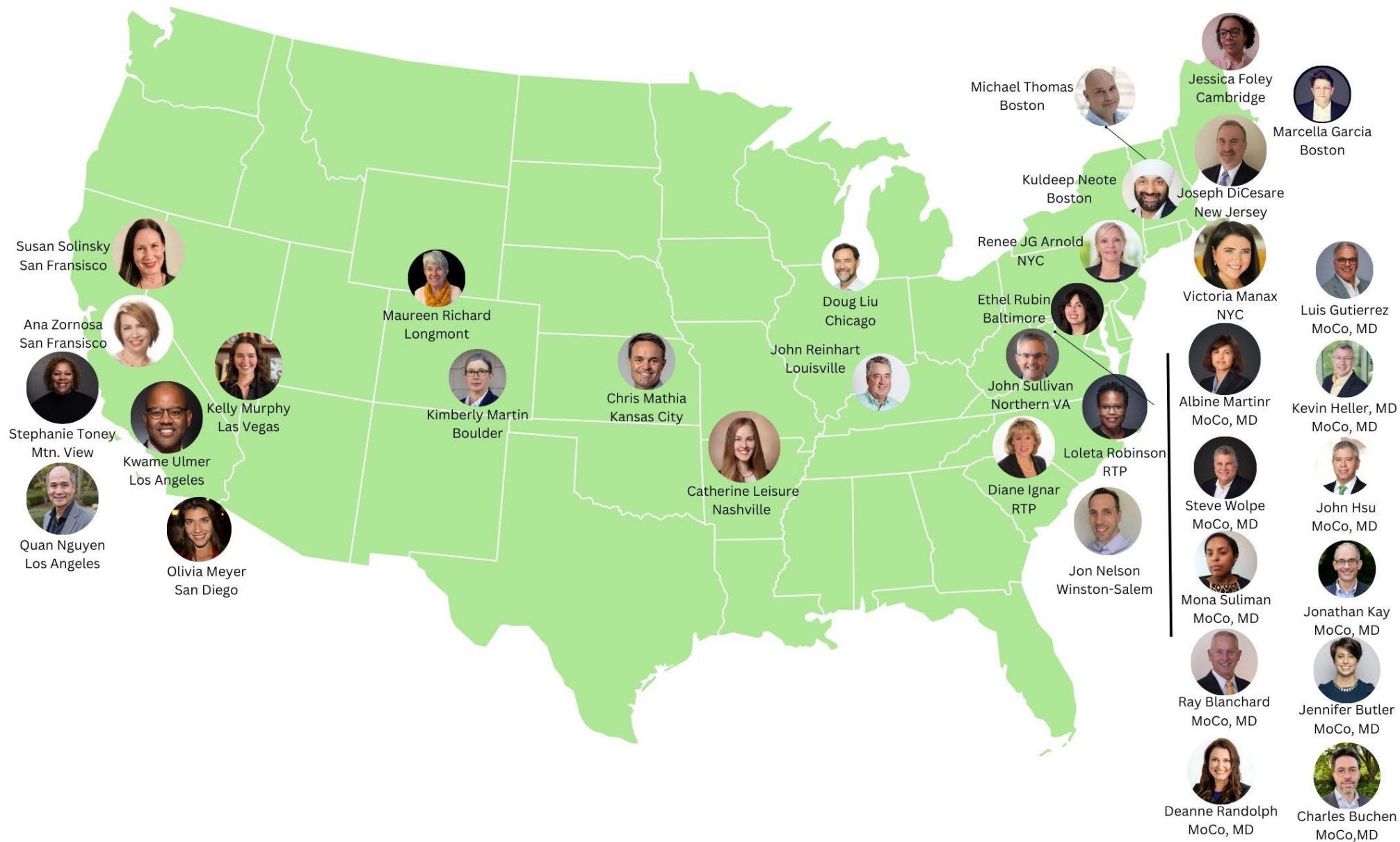
Stephen Wolpe
NIH Seed/ EIR



Anna Zornosa
NIH Seed/ EIR

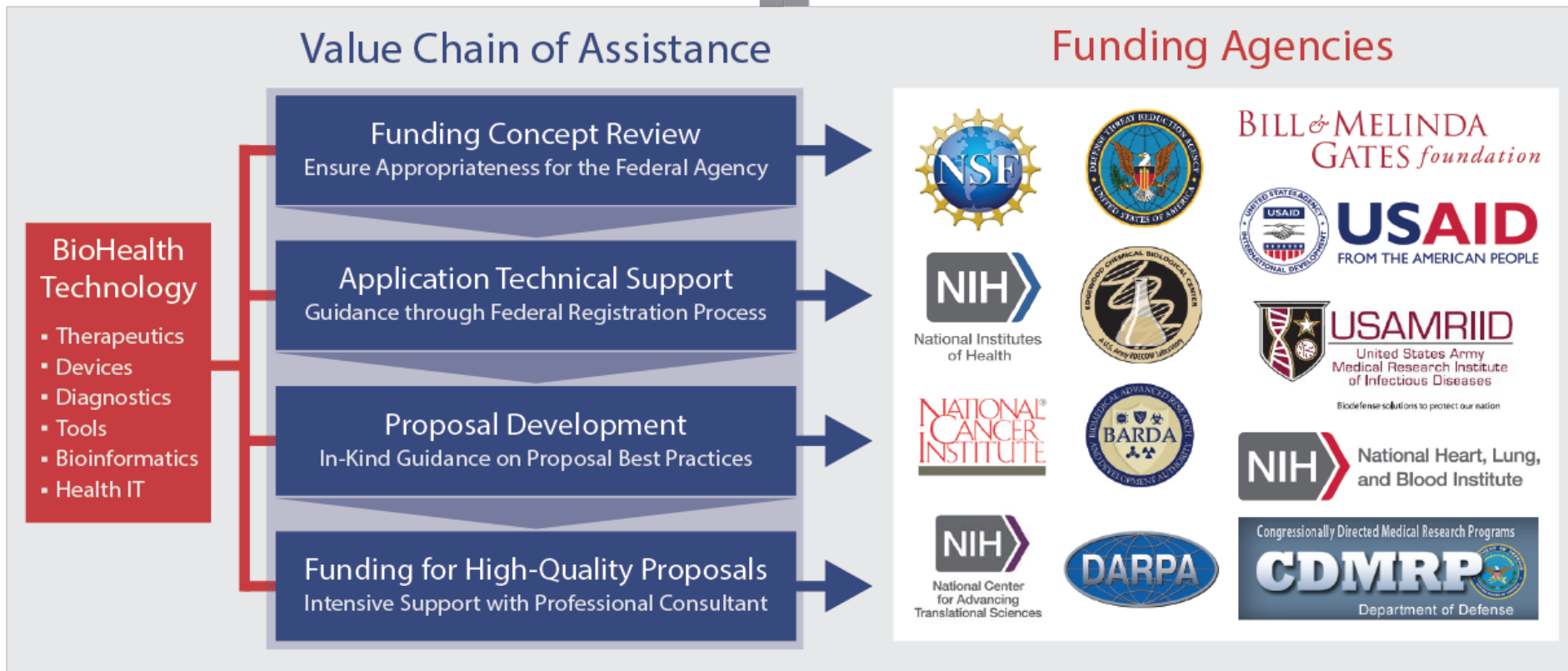


BioHealth Innovation EIRs & Strategists Team



BHI Federal Funding Assistance

- \$5 billion annual United States Government program coordinated by the Small Business Administration provides grants or contracts to small businesses to spur technological innovation
- Grants awarded in 3 phases between \$150,000 and \$4.0 million
- Non-dilutive



BHI SBIR/STTR Assistance Program Overview

BioHealth Innovation, Inc. (BHI) is a leader in providing SBIR/STTR assistance to growth stage companies ready to advance their healthcare initiatives and commercialize new technologies. BHI works with our clients from beginning-to-end to provide a customizable experience dependent on their specific needs.

BHI boasts a **3x** win rate compared to the national average!

SERVICES OFFERED

Full Development Program

BHI provides in-depth help throughout the entire writing, submission, and resubmission process. This includes (but is not limited to) strategizing, crafting specific aims and overall narrative, managing communication with program officers, developing the budget, and drafting components of the grant.

This program is project-based, not hourly-based.

Targeted Development Program

BHI commits to 10-20 hours providing feedback and general advice, editing research and commercialization plans, reviewing the budget, assisting with grant administration and rules, and advising on general strategy.

Grant Mapping

Whether you possess grant writing skills or not, identifying the right funding opportunity for your specific goals and situation can be challenging. BHI helps support companies in finding non-dilutive funding through federal and non-government organizations to fuel your success, delivering options tailored to your unique circumstances.

BHI Commercialization Support

Market Research

Our comprehensive market research service empowers life science companies to make informed decisions as they bring their innovations to market. We conduct in-depth analyses of industry trends, competitor landscapes, and potential customer segments to identify lucrative opportunities and potential challenges. Our expert team utilizes cutting-edge research methodologies to gather actionable insights, helping you refine your value proposition, optimize your go-to-market strategy, and maximize your technology's commercial potential. With our tailored market research, you'll gain the knowledge and confidence to navigate the complex life sciences marketplace effectively.

Maryland Innovation Initiative - Commercialization Support

We provide expert guidance throughout the commercialization process, helping awardees transform their groundbreaking research into market-ready products. Our services include refining business strategies, conducting targeted market research, and developing compelling investor presentations. By leveraging our industry expertise and extensive network, we enable MII recipients to navigate the complex path from lab to market, significantly enhancing their chances of commercial success and accelerating the timeline to market entry.

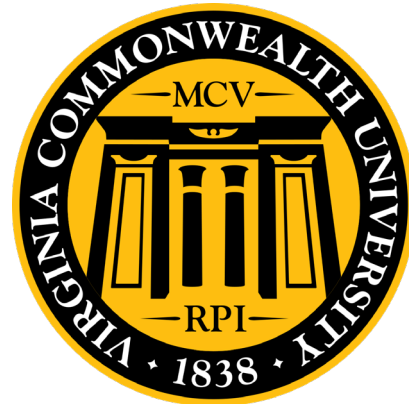
University Commercialization Support



GEORGETOWN UNIVERSITY



University of California
San Francisco



University of Sfax
TUNISIA

INTERNATIONAL COLLABORATION: BHI'S 3-YEAR MENTORSHIP PROGRAM FOR 15 KOREAN COMPANIES

BHI-KOSME US Market Entry Program

To create a viable strategy for international expansion by understanding the competitive landscape in the US, clarifying a company's value proposition, identifying new target markets, and refining the business model.

KOSME is a Korean-government-funded non-profit created over forty years ago to support small and medium enterprises in Korea.

In 2021, 2022, and 2023, cohorts of five Korean companies participated in a 12 to 20-week BHI program to accelerate their entrance into the US.

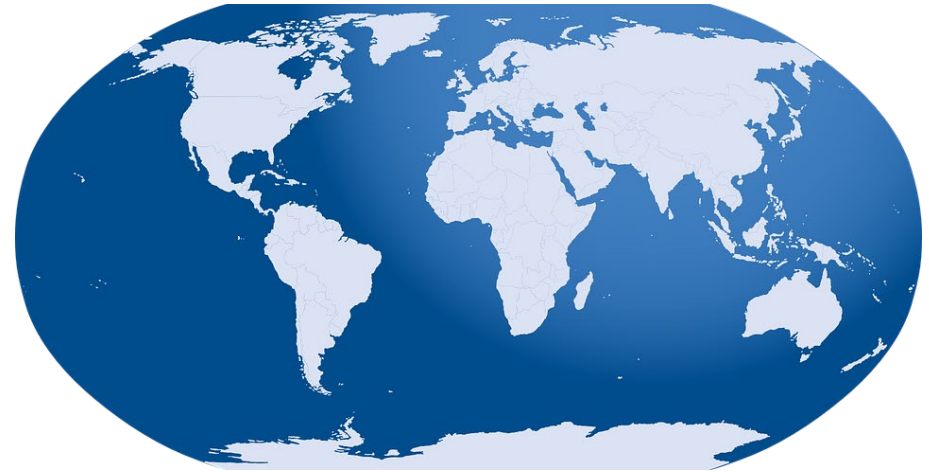
The cohorts:

- Attended virtual lectures from subject matter experts,
- Received 1:1 and group mentoring from BHI's EIRs,
- Completed assignments, presentations and milestones;
- Connected with strategic US partners and relevant networks; and
- Participated in the annual BioHealth Capital Region Forum and the Crab Trap pitch competition.



BHI International Soft-Landing Program

- U.S. Subsidiary/Corporation Creation
- Business Development and Market Analysis
- Grant Funding/Non-Dilutive Funding Assistance
- Human Resource and General Administration Support
- Marketing and Promotion
- Pricing and Reimbursement
- Regulatory
- Resource Identification



International Company Requirements for U.S. Non-Dilutive Funding

- Company must be 50% controlled and owned by Americans
- Board of Directors must be controlled by Americans
- Most of the funded research must be performed in America

How to qualify:

- Form a U.S. Controlled subsidiary with trusted partners
- Create exclusive cross license agreement between new sub and parent for any new IP and technology created under grant funding
- Hire new U.S. management to manage new subsidiary or form partnership with a U. S . entity like BHI to manage
- Engage U.S. law firm familiar with above structures

BHI International Soft-Landing



BioTalk with Rich Bendis

BioTalk with Rich Bendis is a BioHealth leading podcast featuring conversations with Bio and Healthcare Industry leaders. For the past 7 years, with 160+ episodes and over 50,000 downloads, Rich Bendis, Founder, President, and CEO of BioHealth Innovation Inc. (BHI) and host of BioTalk, has provided a platform for guests to discuss and share their views on the most important topics and developments happening today in the BioHealth industry.



The BioTalk podcast is featured on leading podcast platforms, including:



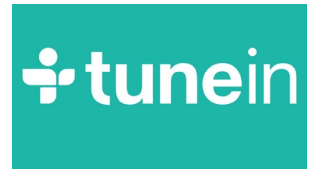
Apple
Podcasts



Spotify



amazon music



Showcasing leading and emerging BioHealth hubs, including Boston, San Francisco, NYC, BioHealth Capital Region, San Diego, RTP, Seattle, Texas, and Canada.

Previous Guests Include:

- **Joel S. Marcus**, Executive Chairman & Founder, Alexandria Real Estate Equities, Inc.
- **Peter S. Briskman**, Executive Managing Director, Brokerage, Jones Lang LaSalle IP, Inc. (JLL)
- **Anthony S. Fauci, M.D.**, Former Director of the National Institute of Allergy and Infectious Diseases (NIAID)
- **Ron Piervincenzi, Ph.D.**, CEO of United States Pharmacopeia (USP)
- **Jay A. Perman, MD**, Chancellor, University System of Maryland (USM)
- **Mr. Hakdo Kim**, President, Korea SMEs & Startups Agency (KOSME)
- **Peter Ronco**, CEO, Emmes
- **Dr. Eric Edwards**, CEO, Phlow Corp
- **Alex Philippidis**, Senior News Editor, Genetic Engineering and Biotechnology News
- **Gary Disbrow, Ph.D.**, Director of the Biomedical Advanced Research and Development Authority (BARDA)
- **Anthony D. Saleh, Ph.D.**, CEO, miRecule
- **Paul Vulto & Jos Joore**, Co-Founders, Mimetas
- **Joey R. Hood**, U.S. Ambassador to the Republic of Tunisia
- **Michelle Tarver, M.D.**, Deputy Center Director, Chief Transformation Officer, Center for Devices and Radiological Health (CDRH), US Food and Drug Administration



Website, News & More

BHI Website

The BHI website has news, an events calendar, research publications, regional organization feature stories and resources for the biohealth industry.

www.biohealthinnovation.org



Struggling with SBIR/STTR applications?

BHI News

BHI's weekly e-newsletter highlights the Central Maryland region's news articles, national biohealth trends and feature stories.

<https://biohealthinnovation.org/newsletter-archives/>



BioTalk

Rich Bendis, hosts BioTalk — conversations with some of the most accomplished and exciting business, academic, and government leaders in the biohealth industry.

<https://biohealthinnovation.org/biotalk-podcast/>

BHI Contact

1 Church Street, Suite 801
Rockville, MD 20850
301-637-7950

info@biohealthinnovation.org
www.biohealthinnovation.org

